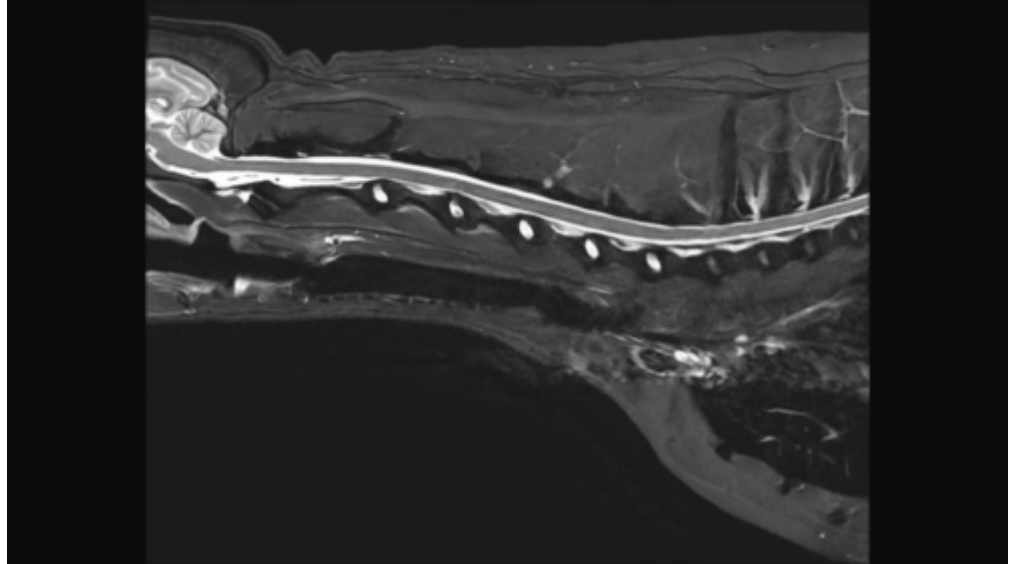


# Cervical Spine MRI

## Scan Coverage

For each patient, the Field of View (FOV) should be re-sized to include the Cerebellum to include the T3 vertebral body.



From:

<https://wiki.virtual-scan.com/> - Knowledge Portal

Permanent link:

[https://wiki.virtual-scan.com/doku.php?id=cervical\\_spine&rev=1740452422](https://wiki.virtual-scan.com/doku.php?id=cervical_spine&rev=1740452422)

Last update: **2025/02/25 03:00**

