

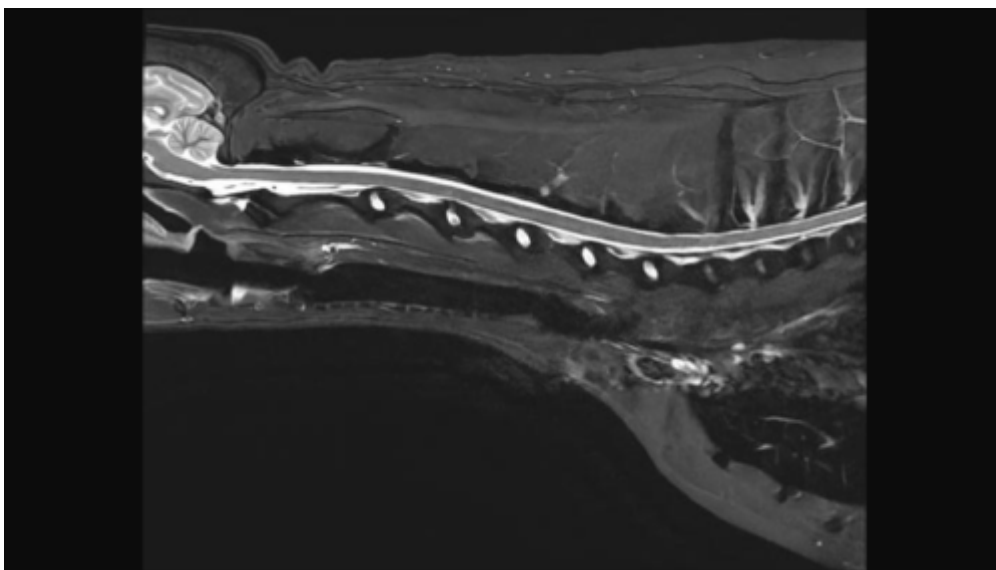
Cervical Spine MRI

Scan Coverage and Planning

Cervical Spine Anatomy page in development.

Sagittal Plane

On the axial and dorsal scout imaging, plan the slices parallel to the center of the spinal cord. On the sagittal scout image, center the FOV on C5. For each patient, the FOV should be re-sized to include the Cerebellum to include the T3 vertebral body. On the dorsal scout image, add enough slices to cover the entire vertebral body out to the transverse processes.



From:

<https://wiki.virtual-scan.com/> - Knowledge Portal

Permanent link:

https://wiki.virtual-scan.com/doku.php?id=cervical_spine&rev=1740453351

Last update: **2025/02/25 03:15**

