

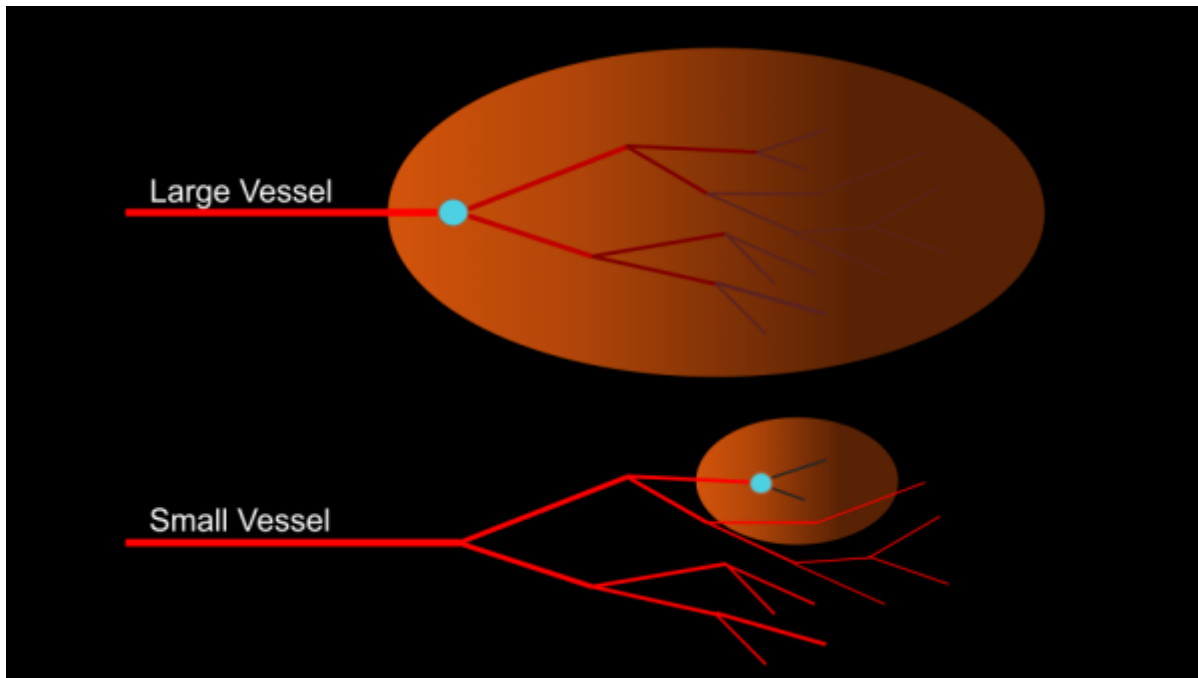
Ischemia

Ischemia

Ischemia is reduced perfusion to an area of tissue due to an occlusion of a vessel. The occlusion of a vessel reduces or prevents downstream cells from getting fresh oxygenated blood resulting in a state of hypoxia. If severe enough, cell death and infarction can occur. Most occlusions are due to a thrombus, embolism, or thromboembolism.

Any area downstream from the occlusion will be affected, so the location and area of effect will be determined by the location of the occlusion. If a proximal/large vessel is occluded, an entire vascular territory may be involved.

Symptoms of ischemia typically present as acute and non-progressive, and will vary depending on the location of the occlusion.



Important Sequences for Identifying Ischemia

From:
<https://wiki.virtual-scan.com/> - Knowledge Portal

Permanent link:
<https://wiki.virtual-scan.com/doku.php?id=ischemia&rev=1777310629>

Last update: **2026/04/27 17:23**

