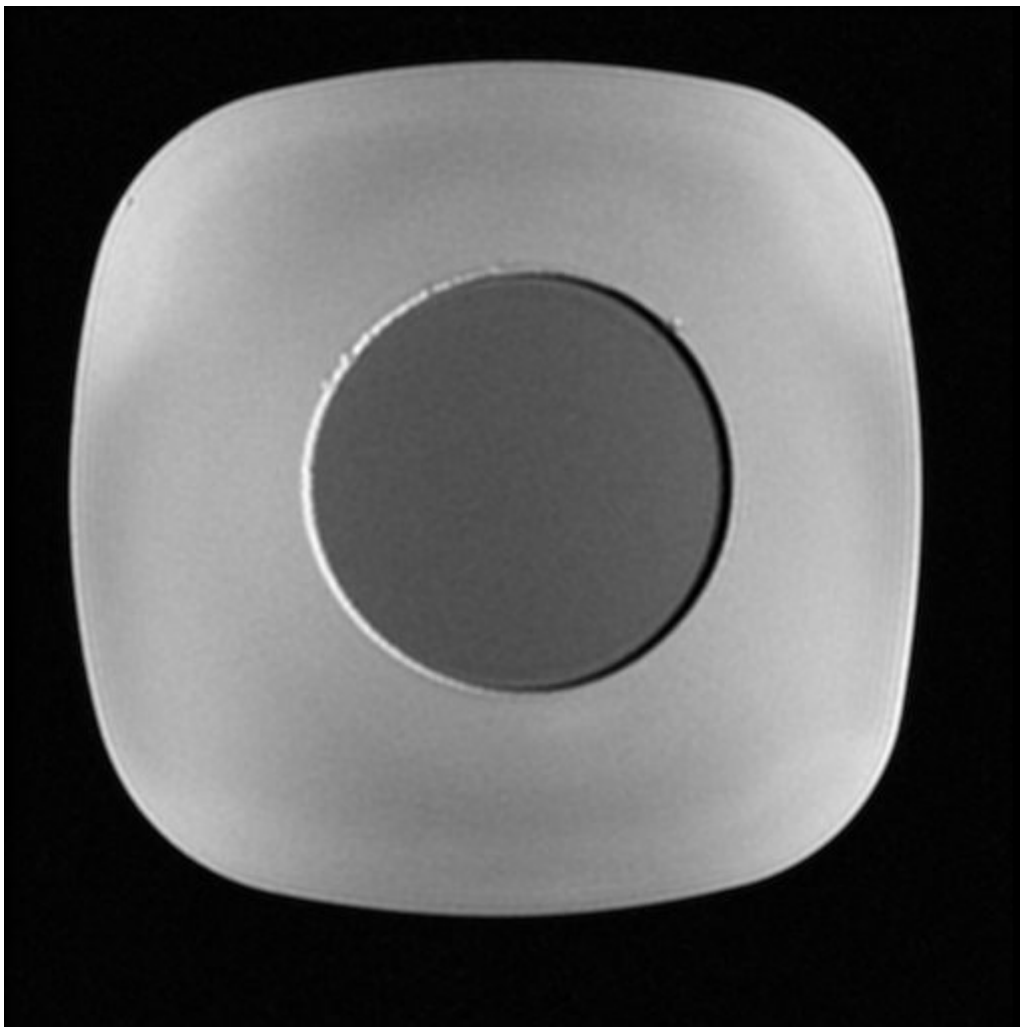


Receiver Bandwidth

What is Receiver Bandwidth?

Receiver bandwidth, often shortened to just 'bandwidth' and not to be confused with transmit bandwidth, is a selectable parameter that controls the range of frequencies to be sampled for an MR image. Indirectly, the bandwidth has implications in a number of things: chemical shift artifact, echo spacing, SAR, susceptibility artifact, motion artifact, Field of View, sampling rate, and a frequency encoding gradient amplitude. This complex list of effects can make bandwidth difficult to understand in isolation.





From:
<https://wiki.virtual-scan.com/> - **Knowledge Portal**

Permanent link:
<https://wiki.virtual-scan.com/doku.php?id=library:bandwidth&rev=1743435195>

Last update: **2025/03/31 15:33**

