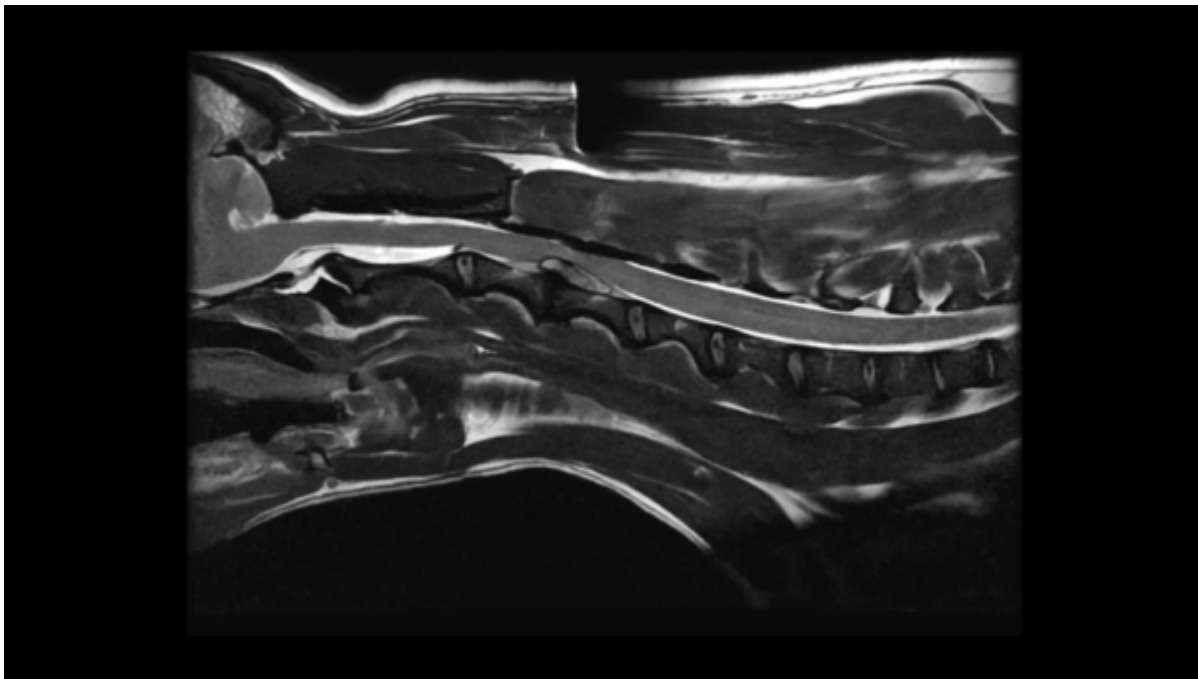


# Disc Disease

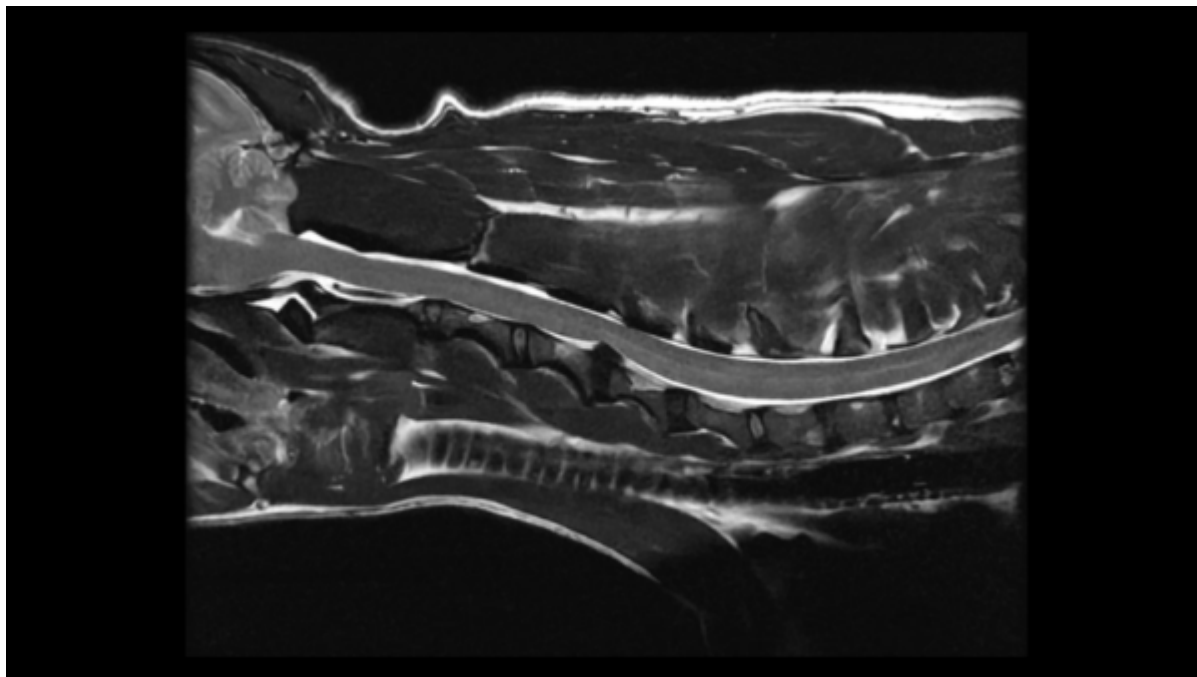
## Disc Pathology

Below are examples of different types of disc extrusions, herniations, and general disc disease imaging findings. The goal of this page is to demonstrate how different the imaging appearance can be in disc disease to help better identify pathology when it is encountered while scanning.

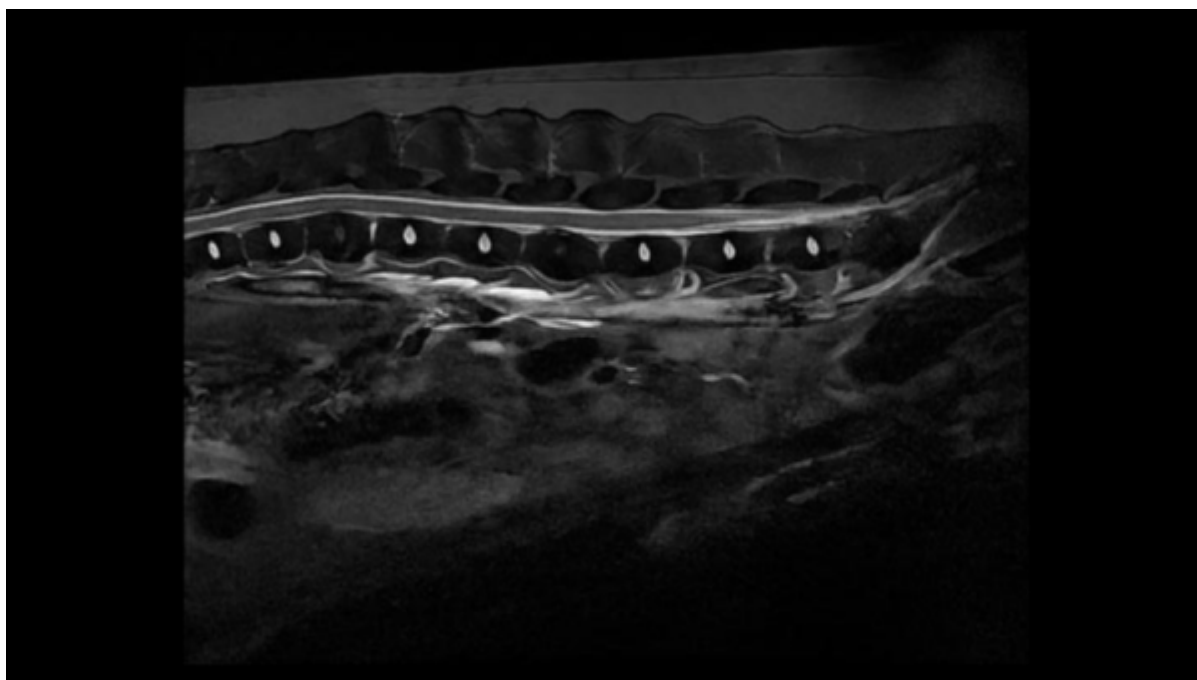
### Acute Disc

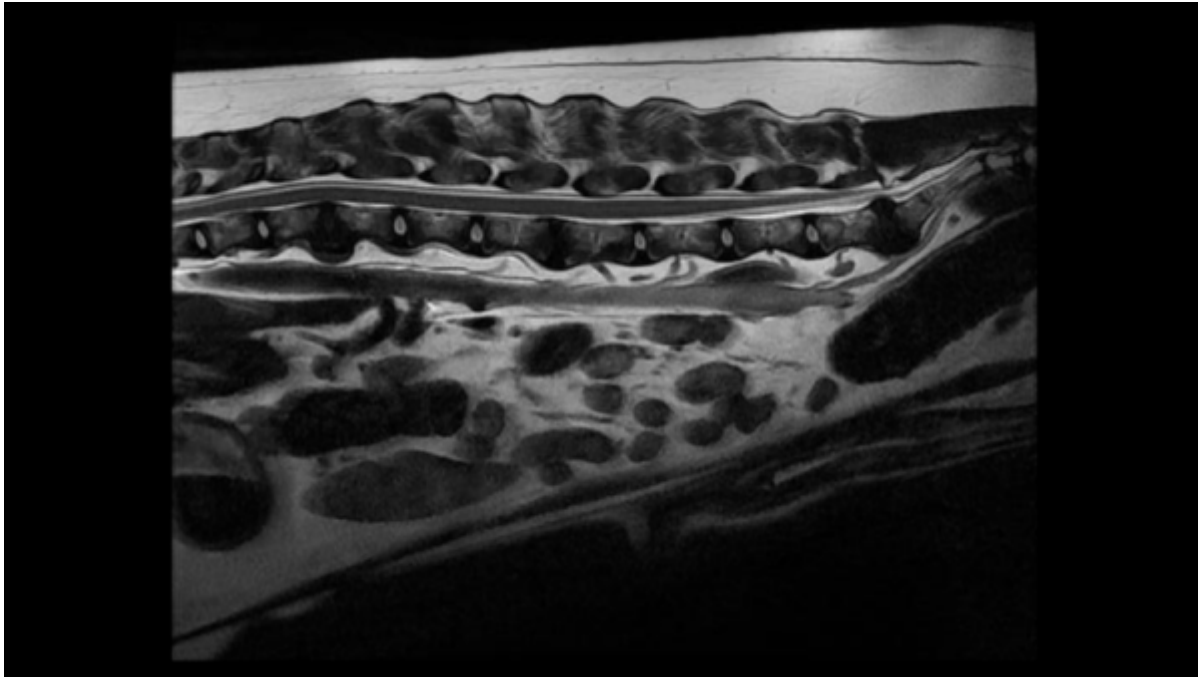


### Chronic Disc

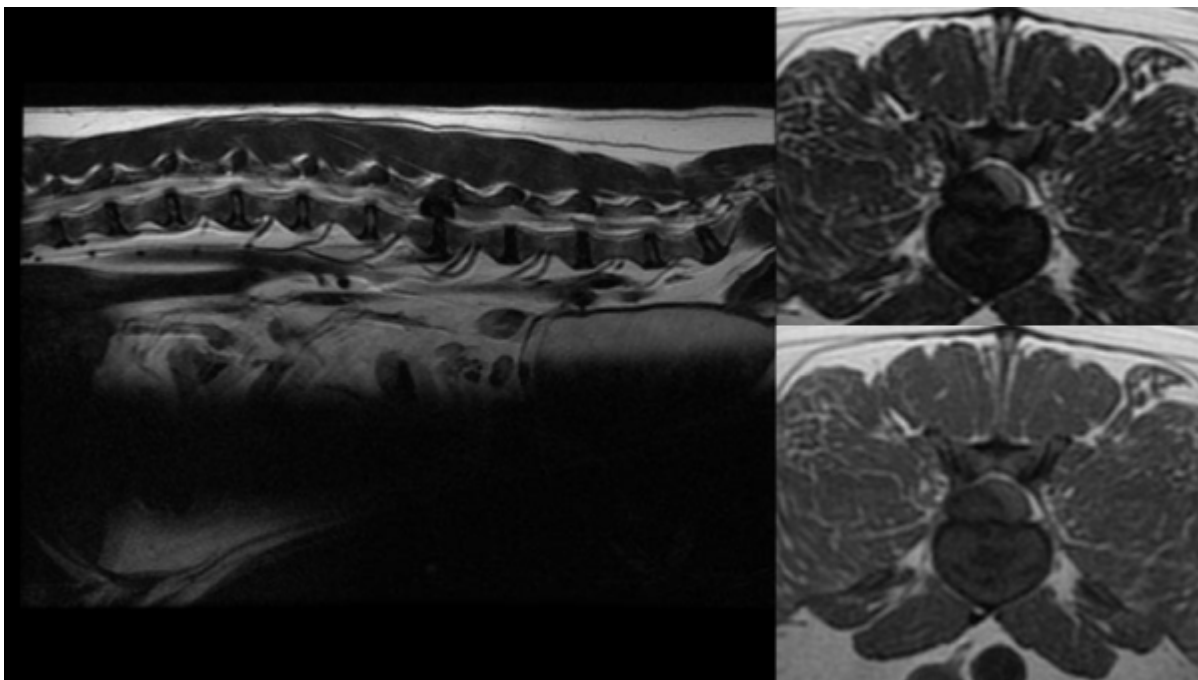


### Disc Degeneration, no Herniation or Extrusion

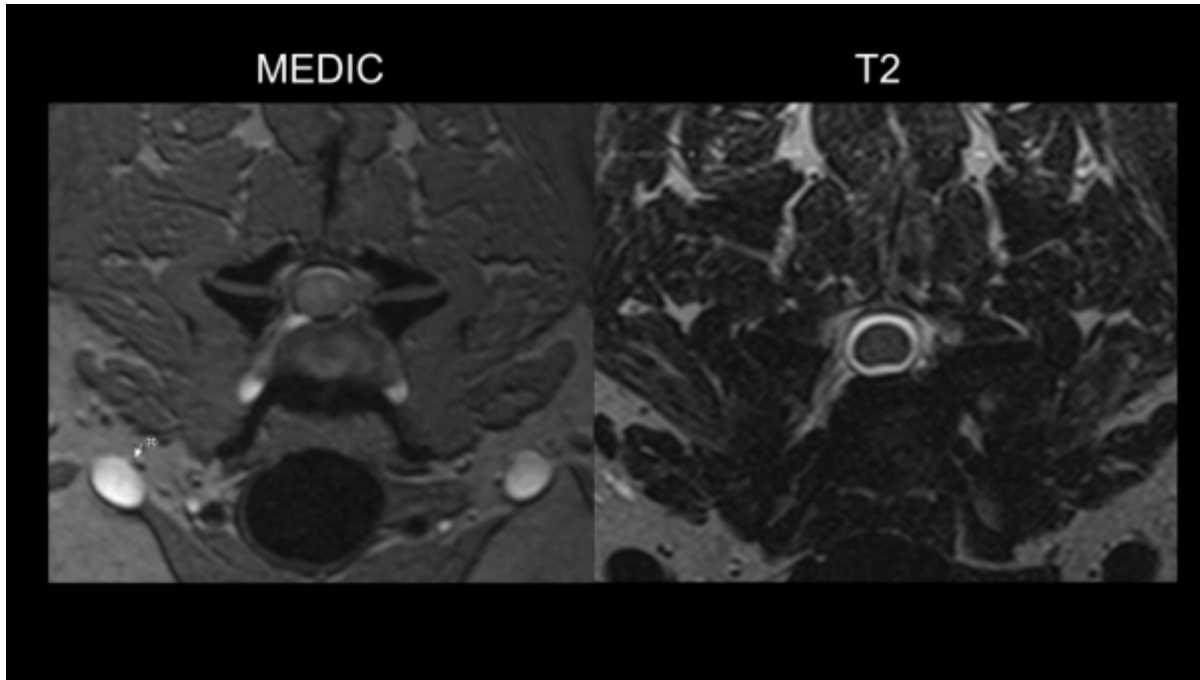




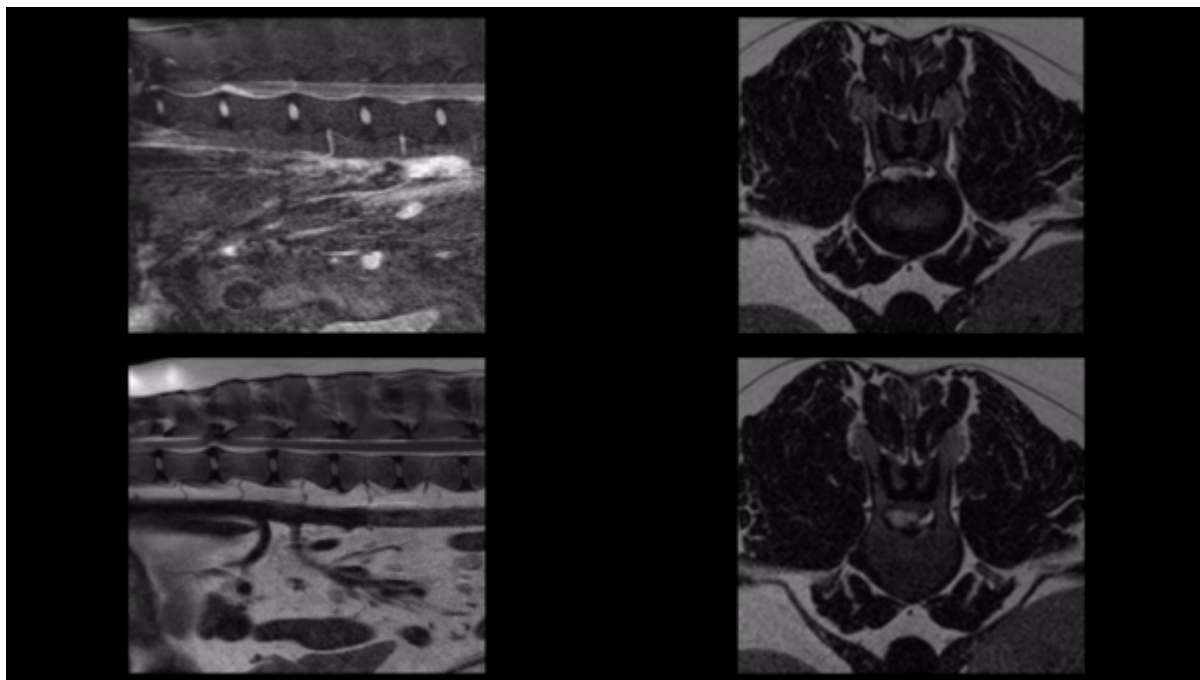
**Right Sided, Large Extrusion**



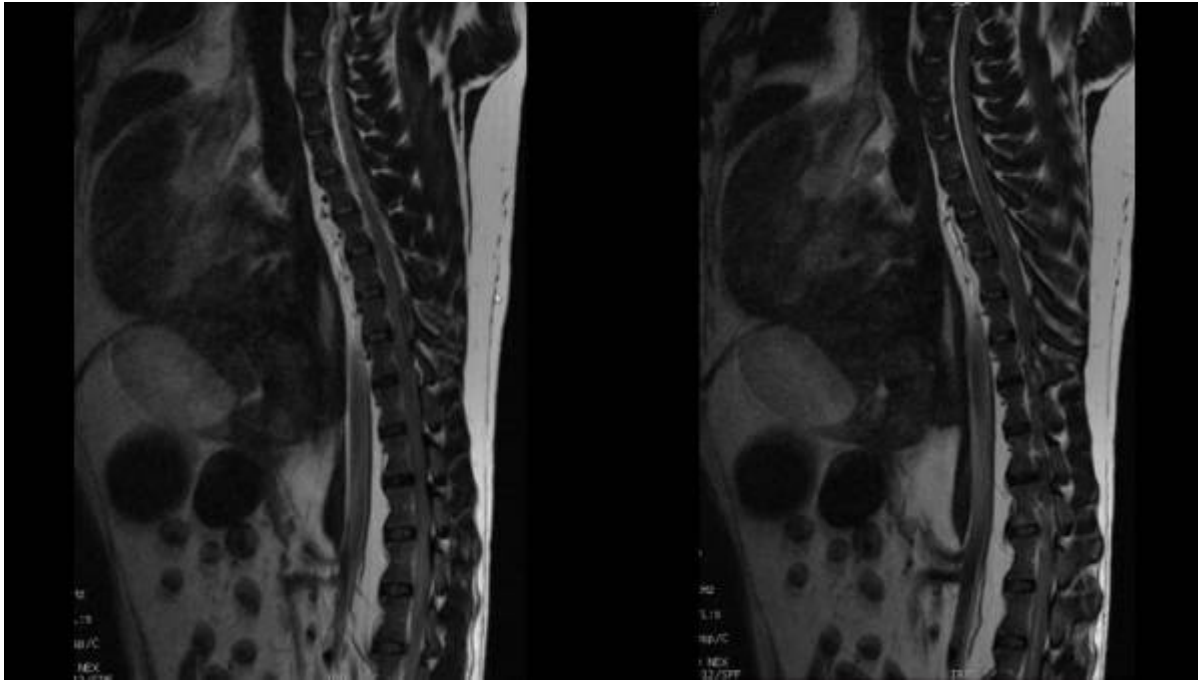
**Foraminal Disc**



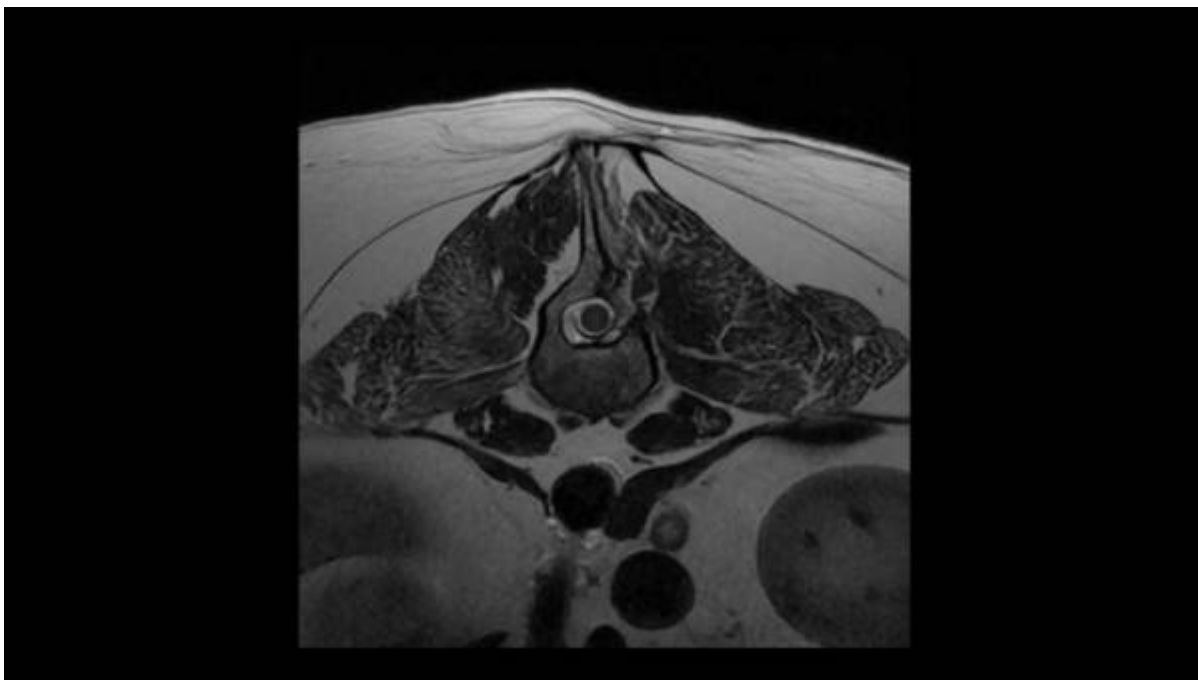
## HNPE



## Hemorrhage



### Prior Hemolaminectomy



From:  
<https://wiki.virtual-scan.com/> - Knowledge Portal

Permanent link:  
[https://wiki.virtual-scan.com/doku.php?id=library:disc\\_disease\\_profiles&rev=1750089824](https://wiki.virtual-scan.com/doku.php?id=library:disc_disease_profiles&rev=1750089824)

Last update: 2025/06/16 16:03

