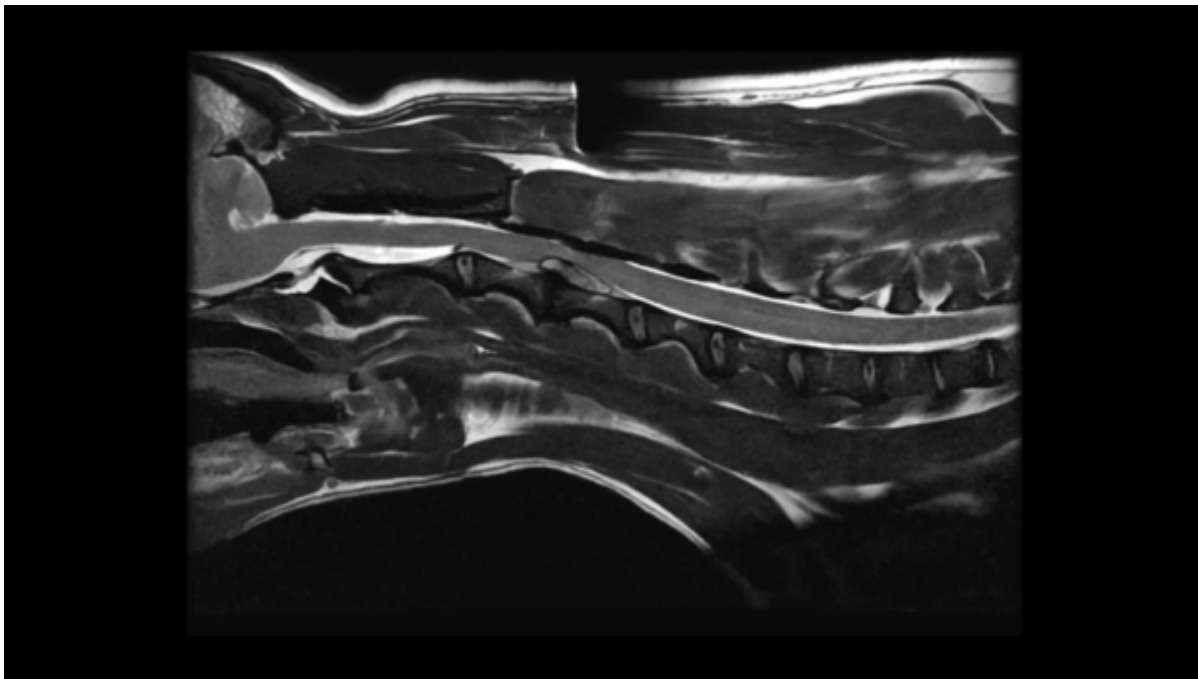


Disc Disease

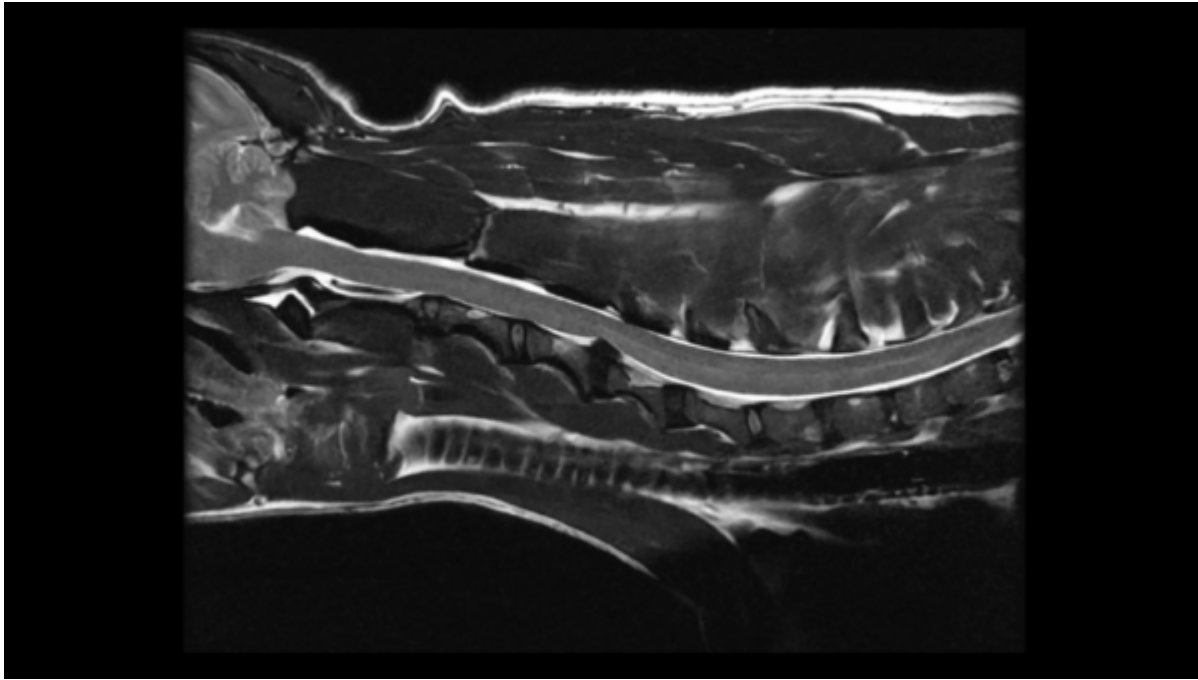
Disc Pathology

Below are examples of different types of disc extrusions, herniations, and general disc disease imaging findings. The goal of this page is to demonstrate how different the imaging appearance can be in disc disease to help better identify pathology when it is encountered while scanning.

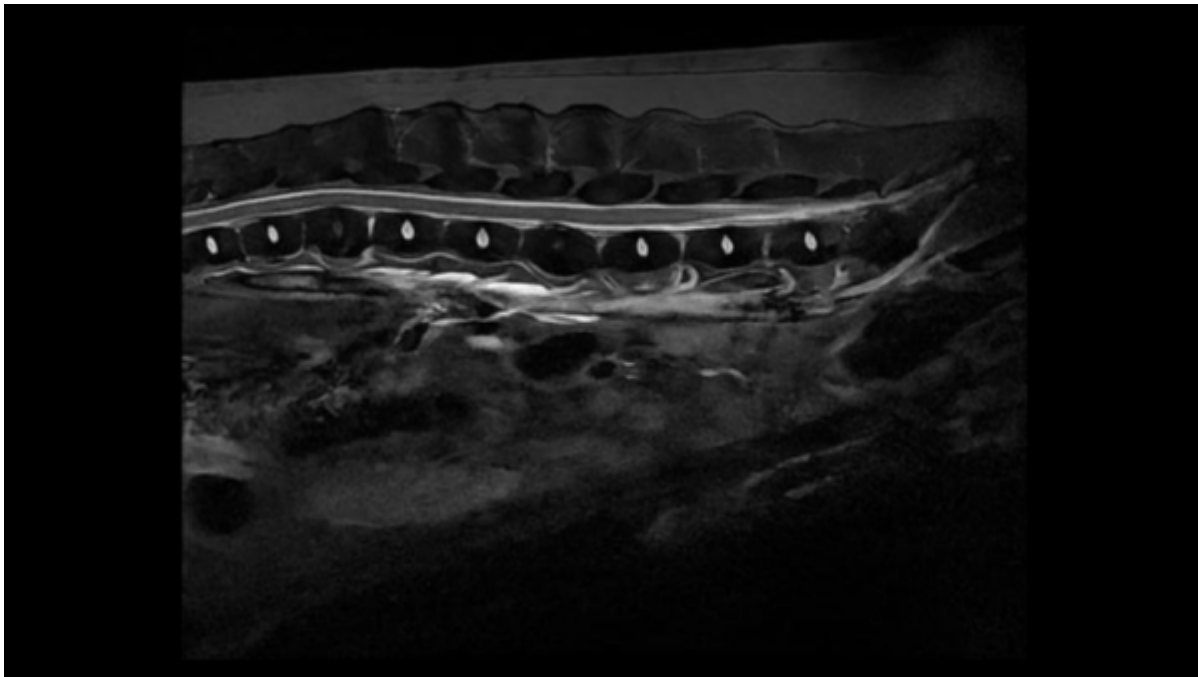
Acute Disc

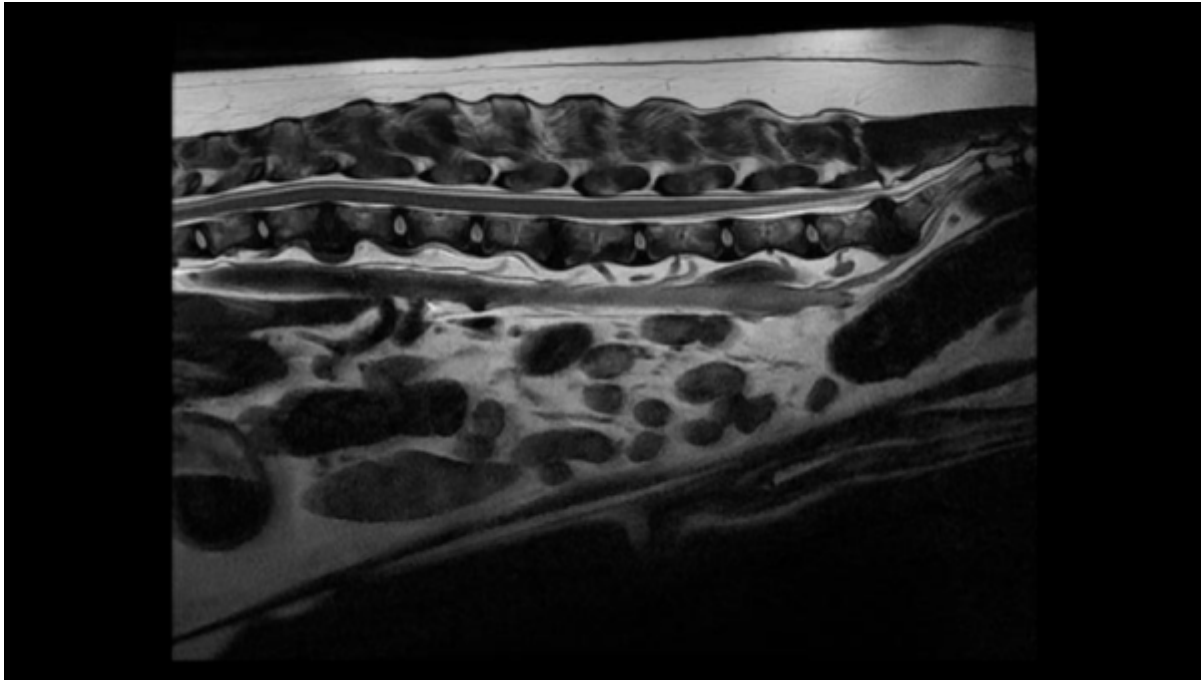


Chronic Disc

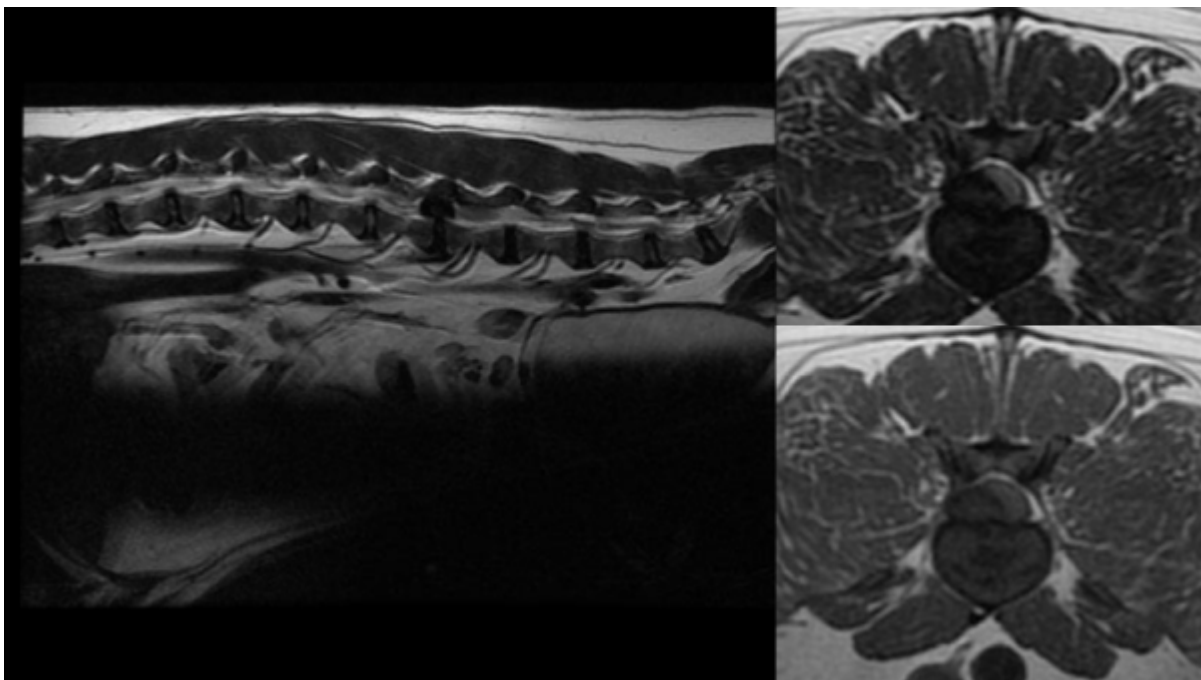


Disc Degeneration, no Herniation or Extrusion

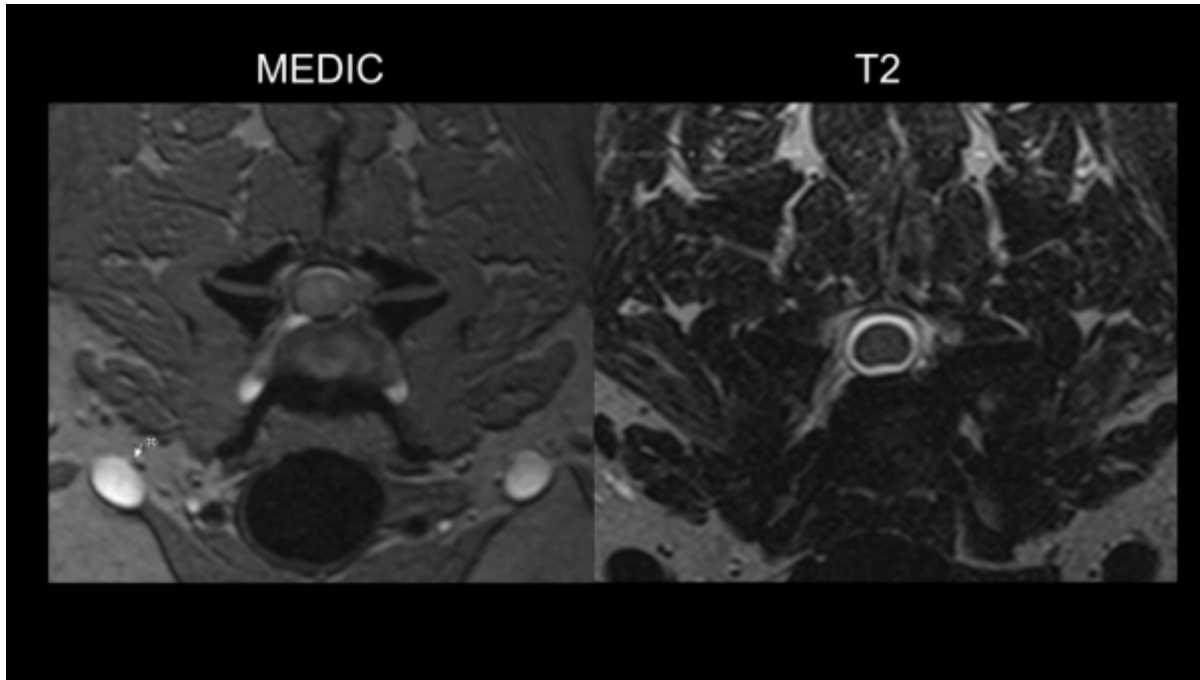




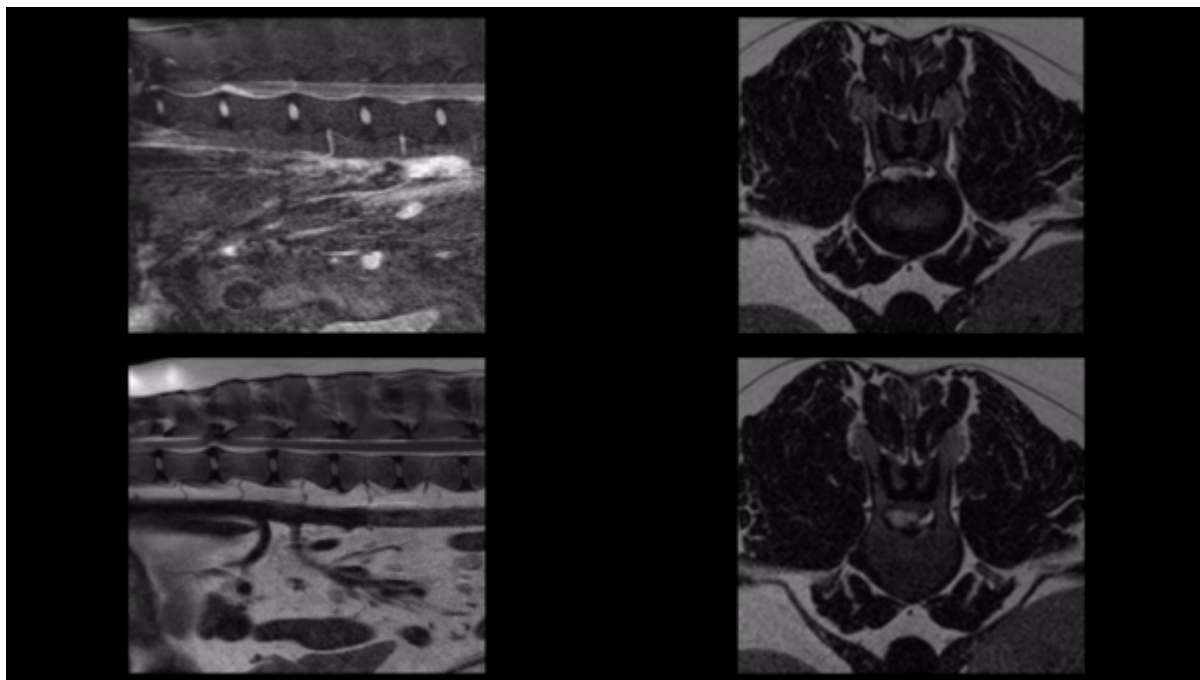
Right Sided, Large Extrusion



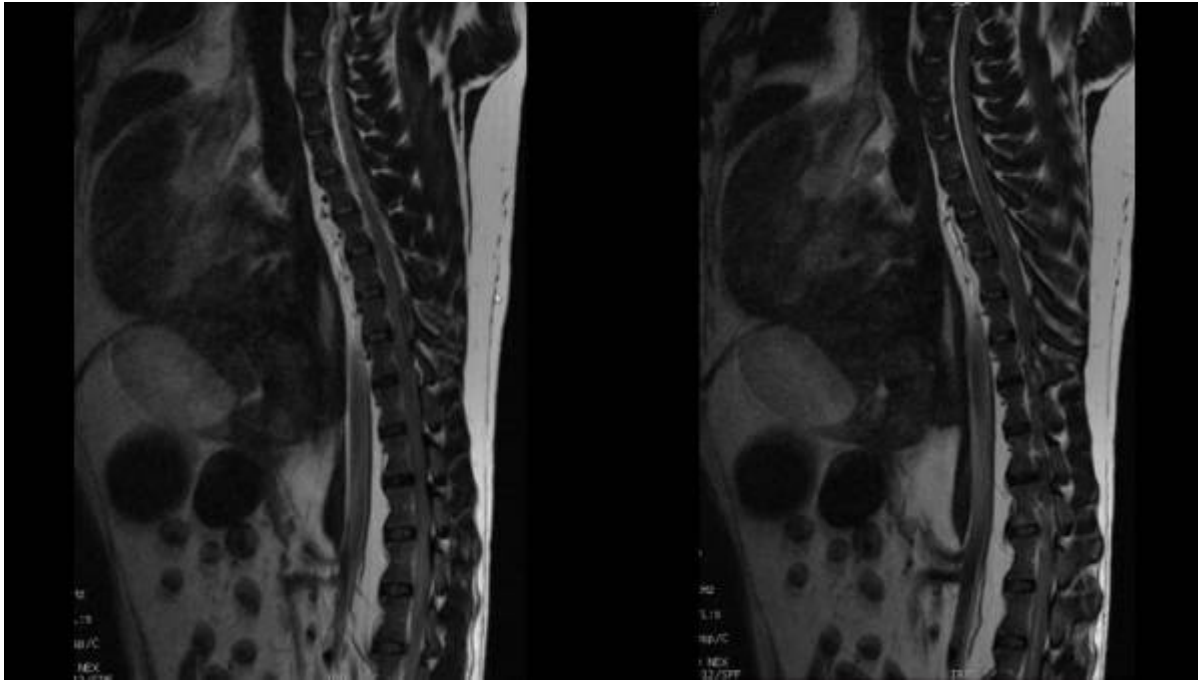
Foraminal Disc



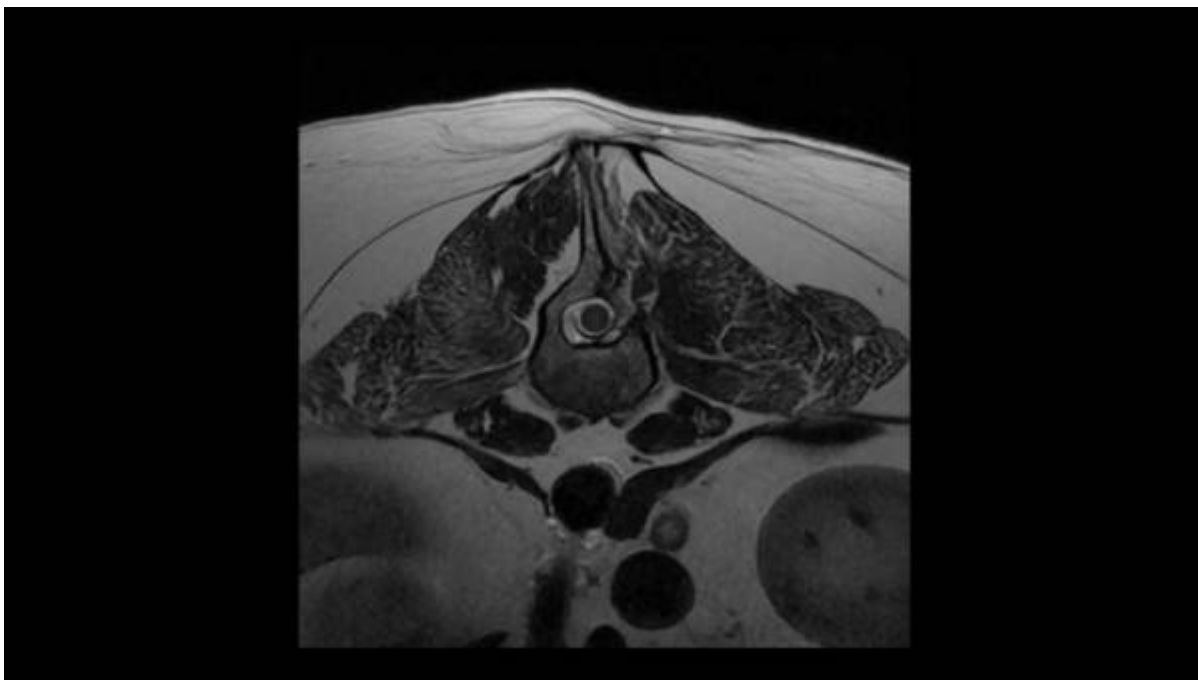
HNPE



Hemorrhage



Prior Hemilaminectomy



From:
<https://wiki.virtual-scan.com/> - Knowledge Portal

Permanent link:
https://wiki.virtual-scan.com/doku.php?id=library:disc_disease_profiles&rev=1750089837

Last update: 2025/06/16 16:03

