

# Meningioma

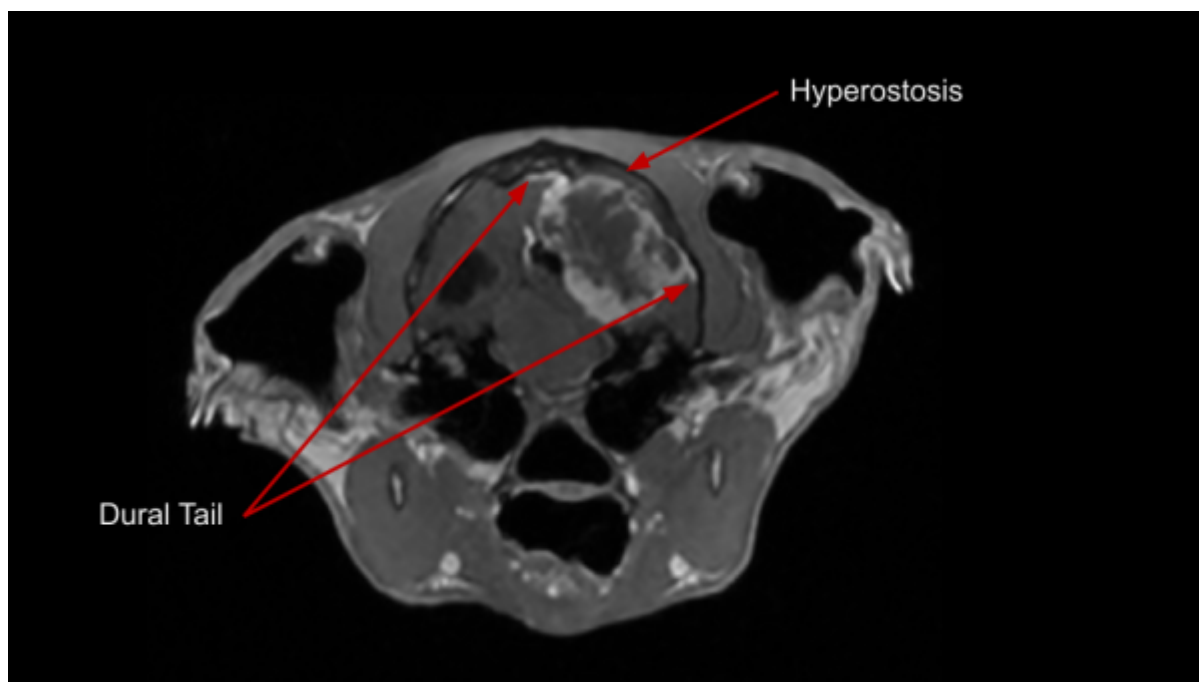
## Meningioma

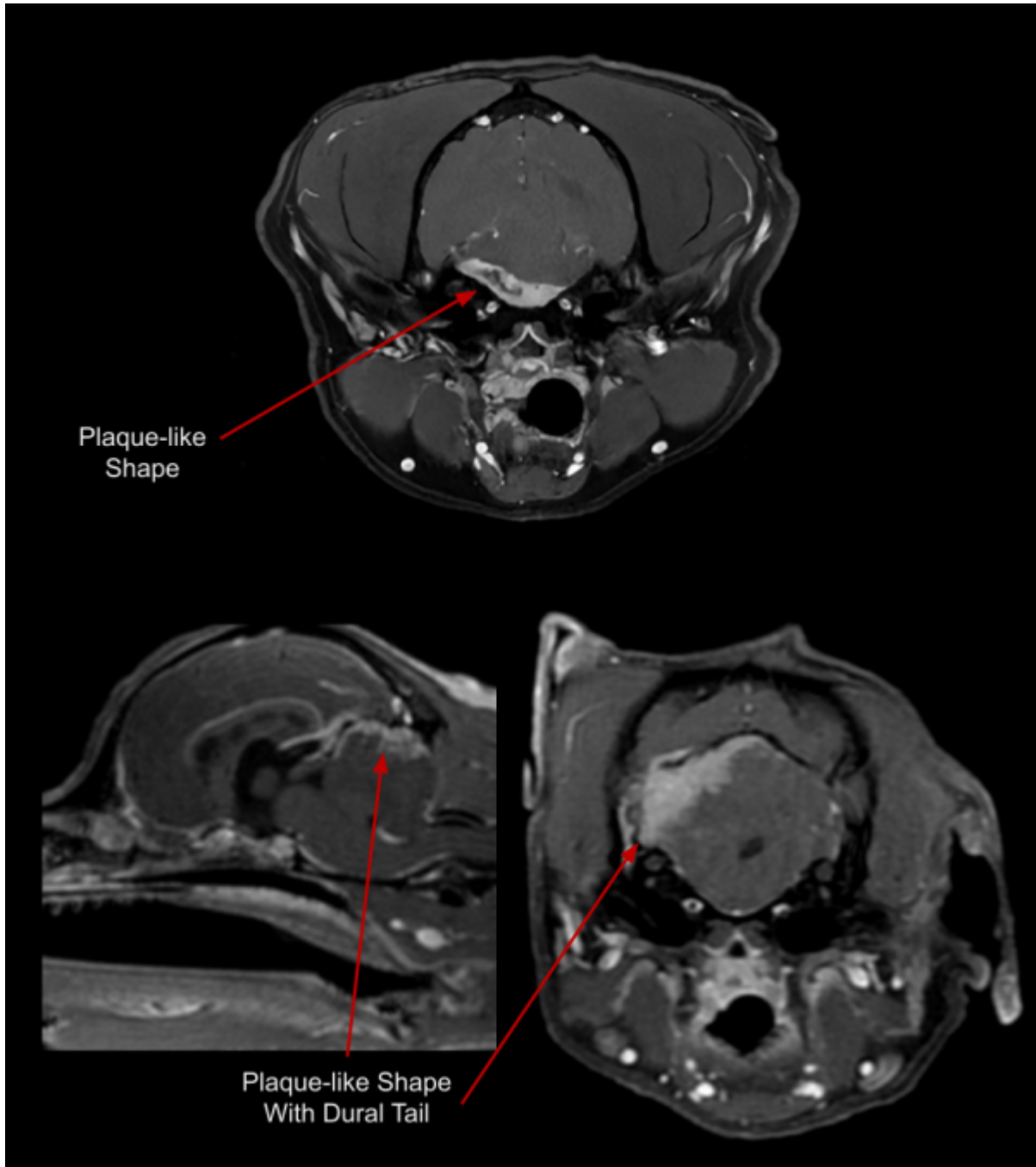
Meningiomas are typically benign and slow growing tumors arising from the meninges. They can occur anywhere along the CNS, but are most common around the brain. Meningiomas have a few key identifying characteristics; some or all may be present:

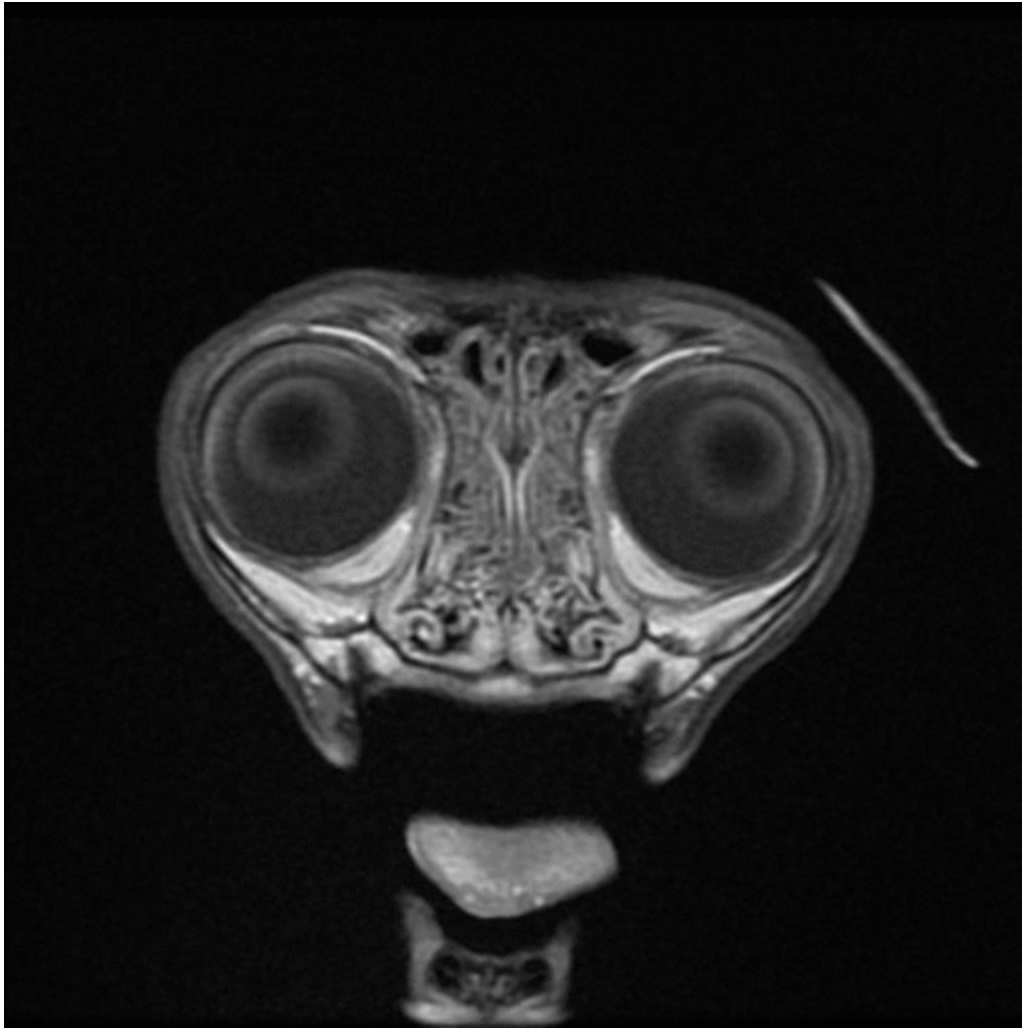
- Vivid contrast enhancement
- 'Dural Tail' sign
- Compression or herniation of other brain structures
- Hyperostosis (bony overgrowth) of the cranium by the tumor
- Hemorrhagic or cystic components

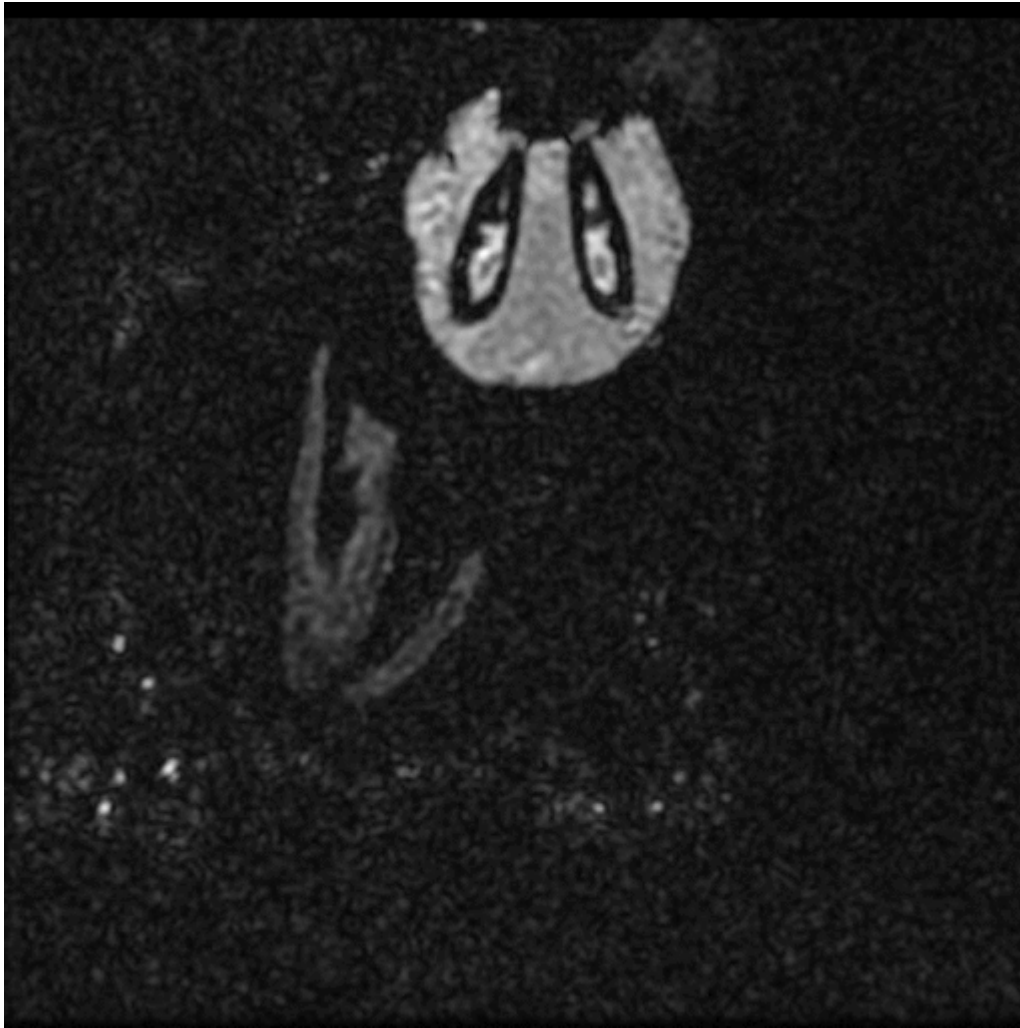
### Important Sequences for Identifying Meningioma

- T1 weighted Post Contrast ; with or without Fat Saturation









From:  
<https://wiki.virtual-scan.com/> - Knowledge Portal

Permanent link:  
<https://wiki.virtual-scan.com/doku.php?id=meningioma&rev=1776190654>

Last update: **2026/04/14 18:17**

