

# Meningioma

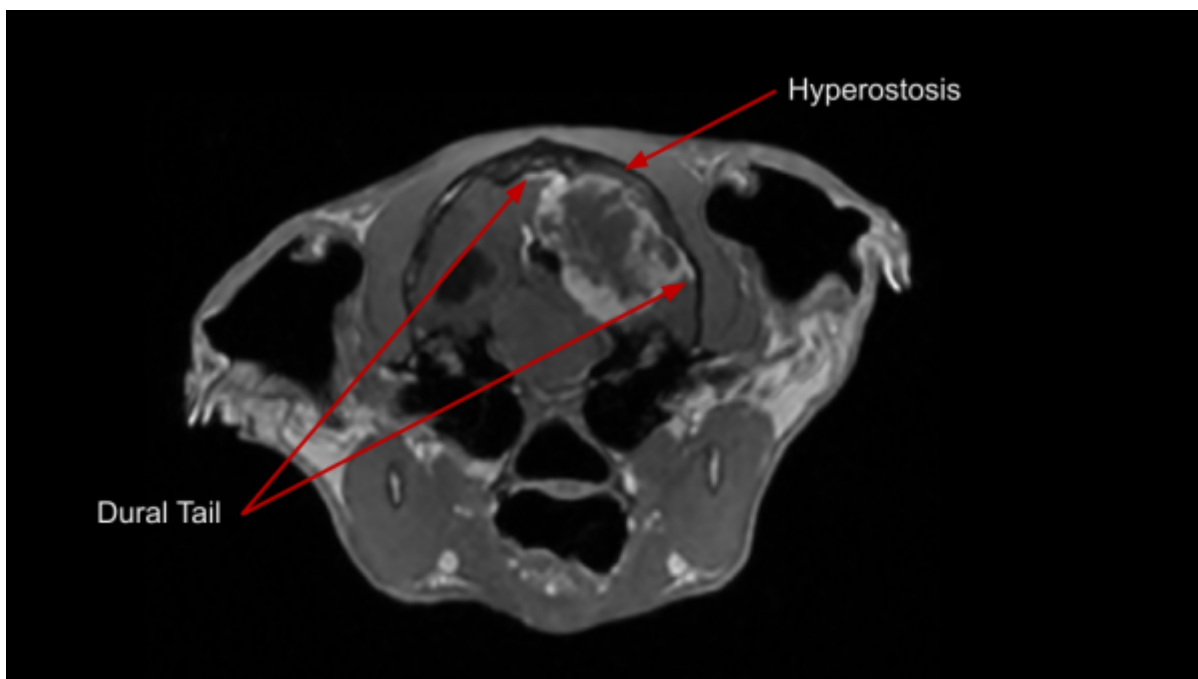
## Meningioma

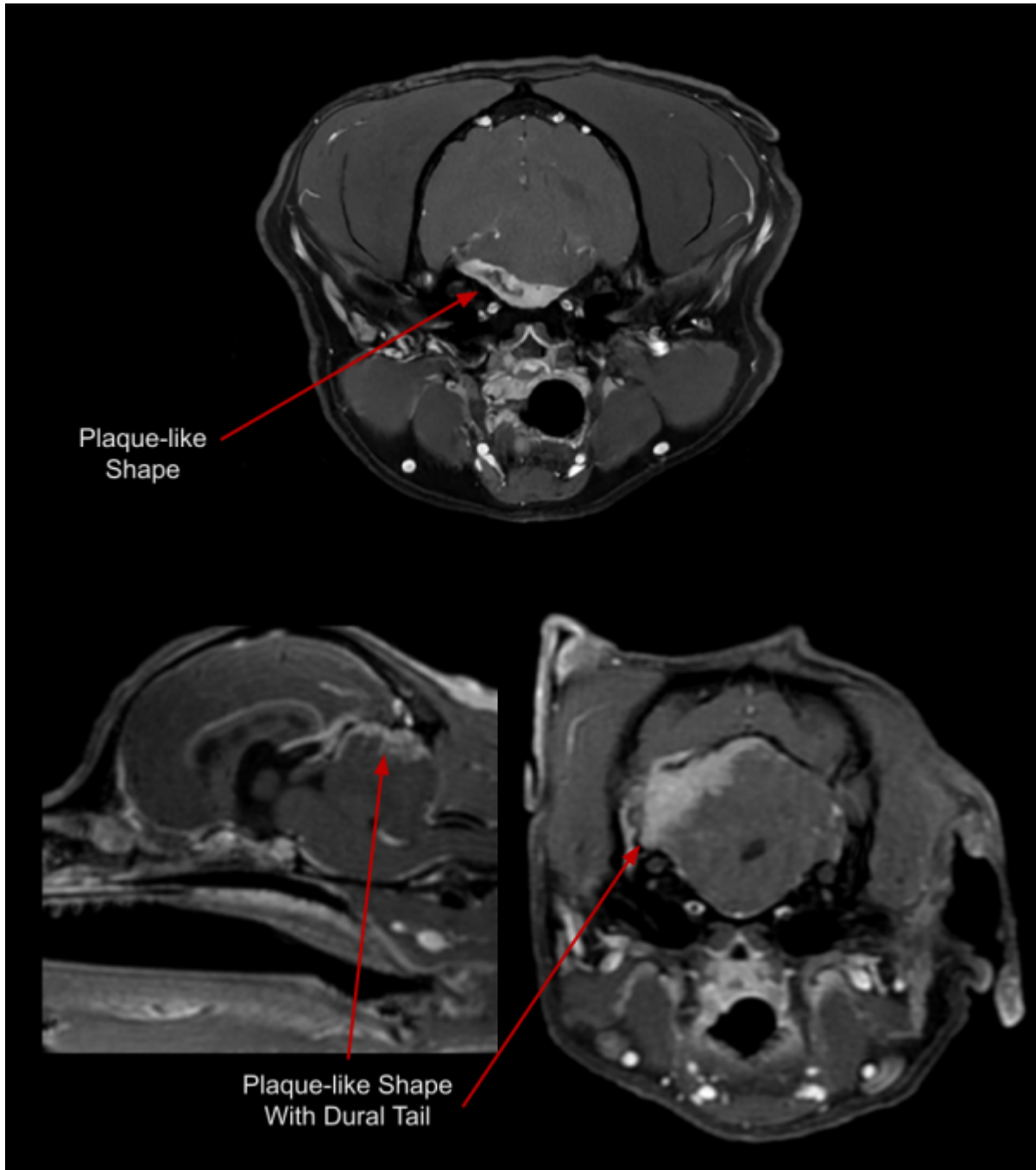
Meningiomas are typically benign and slow growing tumors arising from the meninges. They are commonly well encapsulated, focal, round, and solid. Less commonly, meningiomas can be invasive, have plaque-like shapes, or varied internal composition. They can occur anywhere along the CNS, but are most common around the brain. Meningiomas have a few key identifying characteristics; some or all may be present:

- Vivid contrast enhancement
- 'Dural Tail' sign
- Compression or herniation of other brain structures
- Hyperostosis (bony overgrowth) of the cranium by the tumor
- Hemorrhagic or cystic components

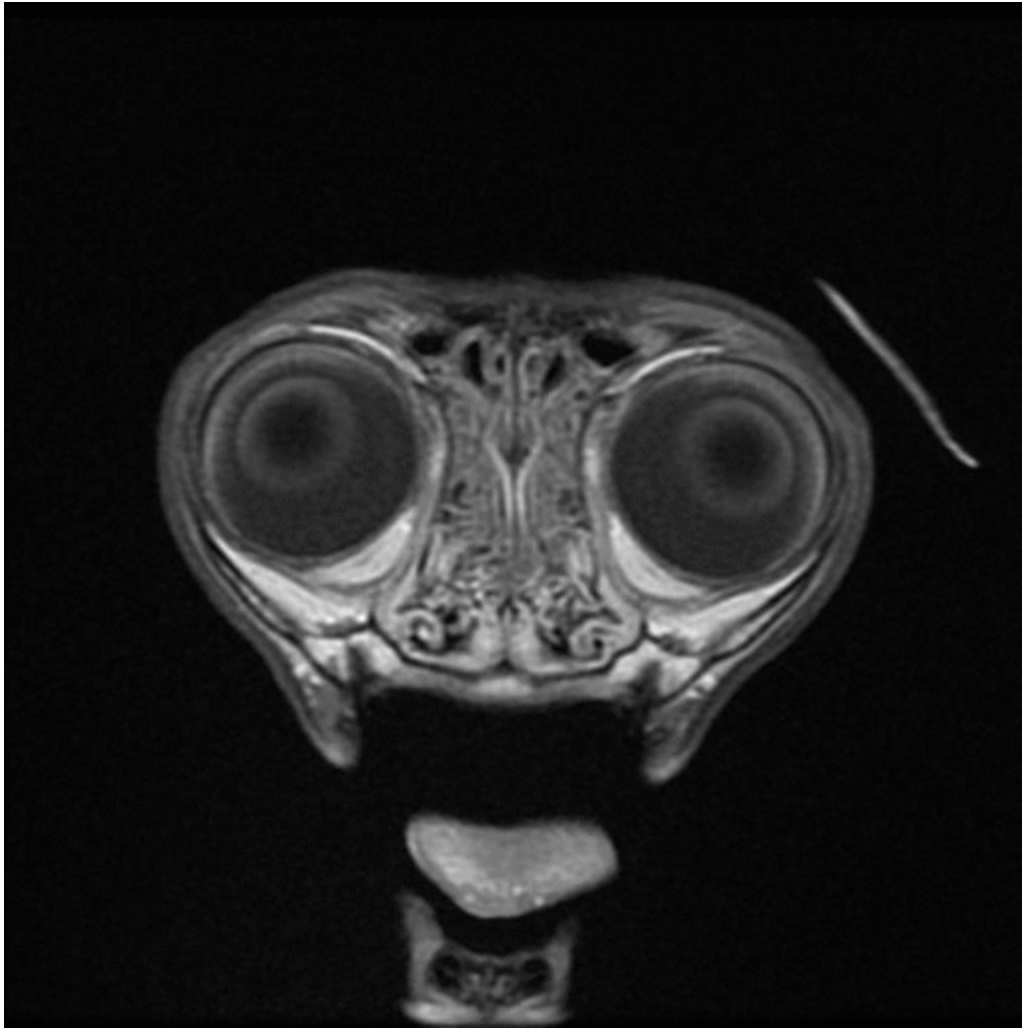
## Important Sequences for Identifying Meningioma

- T1 weighted Post Contrast ; with or without Fat Saturation

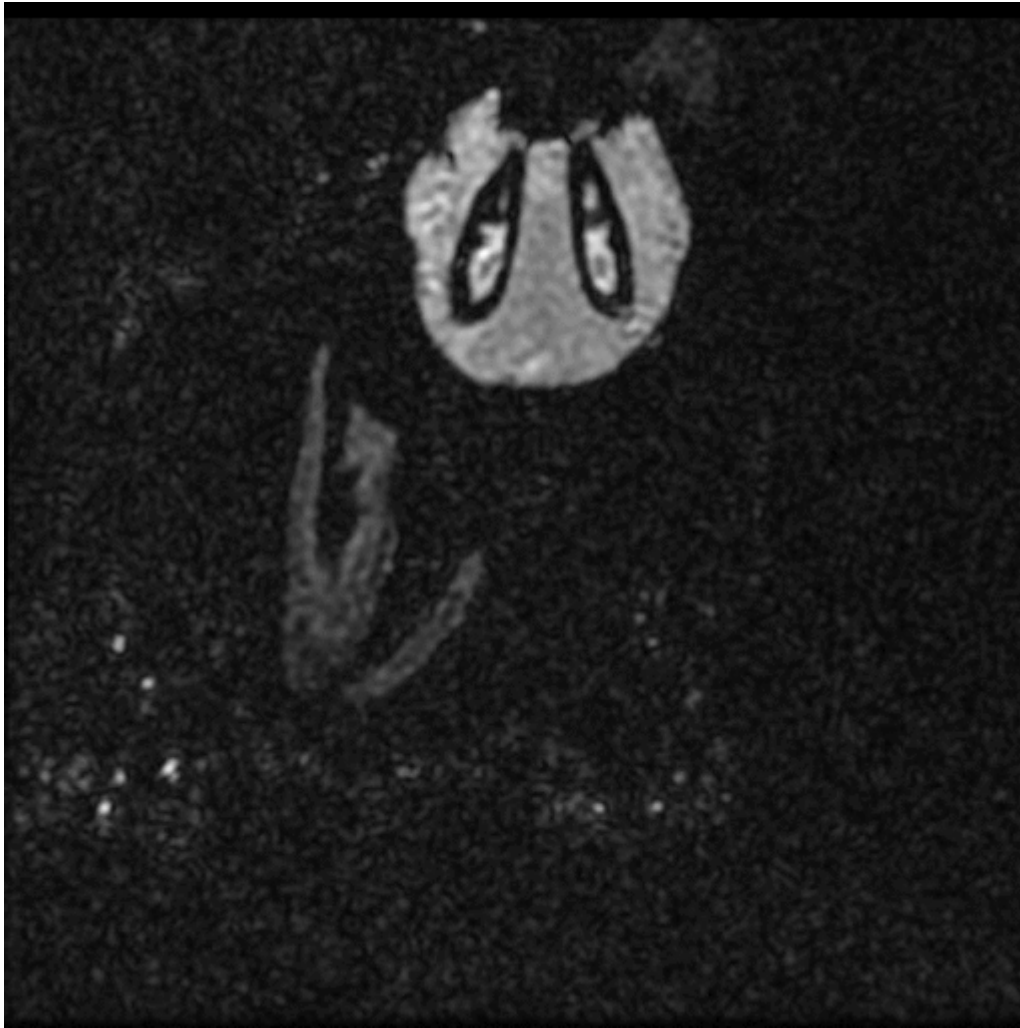




Below: Large meningioma in a cat; note the strong and homogenous enhancement, dural tail, and hyperostosis present



Below: Note the unfortunate presence of TWO meningiomas



From:  
<https://wiki.virtual-scan.com/> - **Knowledge Portal**

Permanent link:  
<https://wiki.virtual-scan.com/doku.php?id=meningioma&rev=1779815663>

Last update: **2026/05/26 17:14**

