

# Other Spine Diseases

## Other Diseases of the Spine

There is more to spine pathology than just IVDD! On this page, there will be case examples of non-IVDD pathology in the spine, and a list of any useful sequences.

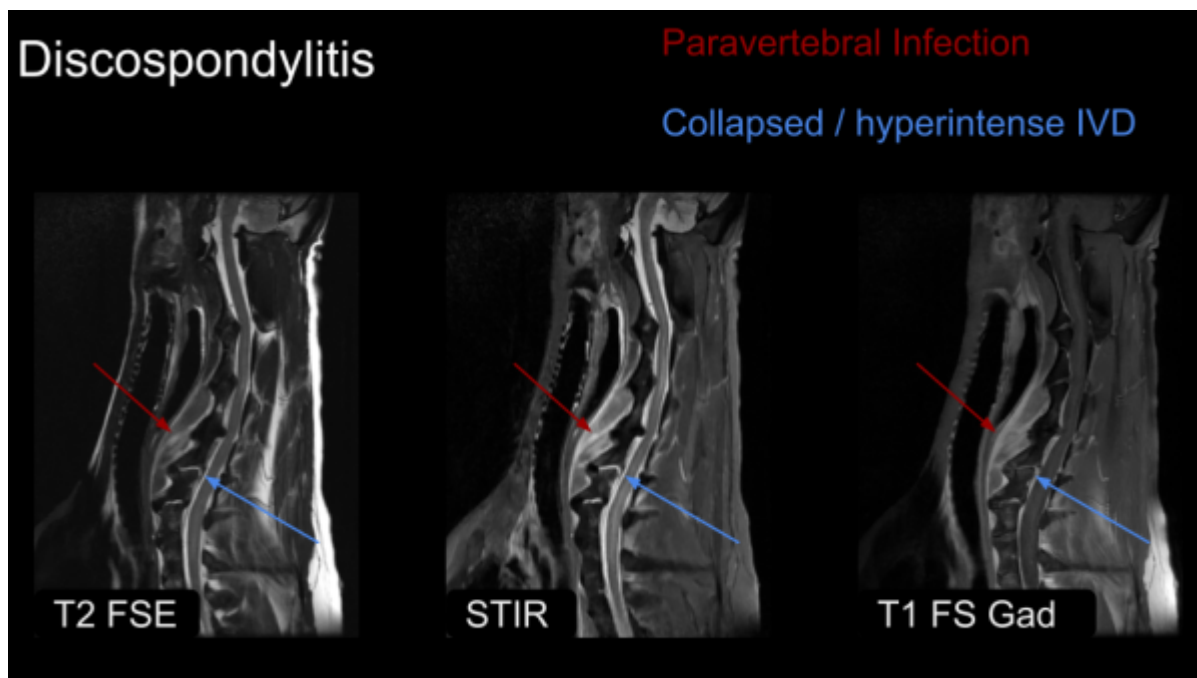
### Discospondylitis

Discospondylitis is an infection of the vertebral endplates and intervertebral disc, most commonly of bacterial origin. Some notable features are:

- Collapse of the IVD
- STIR/T2 hyperintensity
- Contrast enhancement
- Paravertebral inflammation or fluid like collections
- sclerotic changes to vertebrae

Useful sequences:

- STIR
- T1 with and without fat saturation
- T1 post contrast with fat saturation

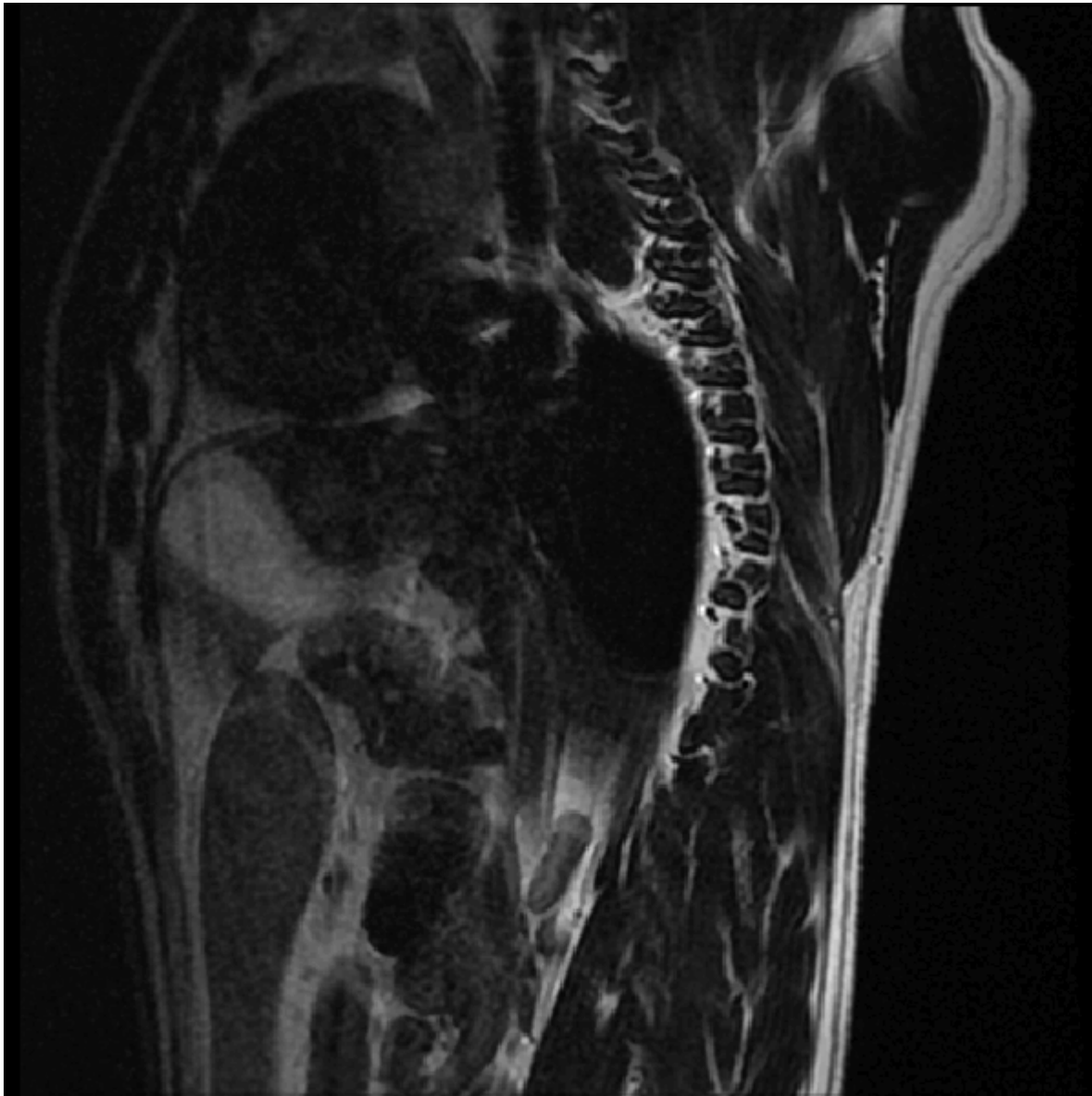


### Arachnoid Diverticulum

Some notable features of arachnoid diverticulum:

- Scalpel sign

- Gliosis
- Lesion demonstrates CSF signal characteristics



Useful

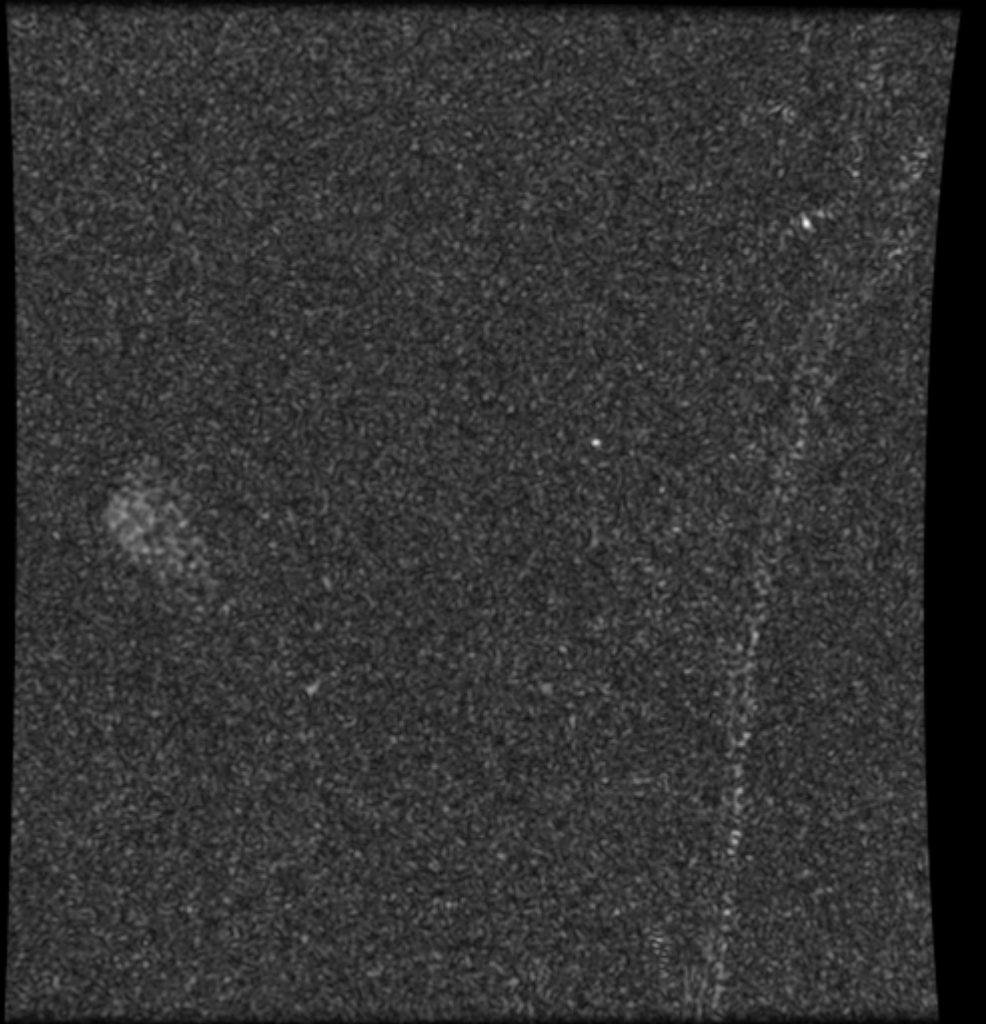
Sequences:

- 3D Myelogram
- 3D FIESTA-C / CISS
- Sag T2 FSE

# Arachnoid Diverticulum

# Gliososis

# Scalpel Sign



From:

<https://wiki.virtual-scan.com/> - **Knowledge Portal**

Permanent link:

<https://wiki.virtual-scan.com/doku.php?id=otherspinediseases&rev=1781282600>

Last update: **2026/06/12 16:43**

